

Alpha Cam

Handheld XRF Analyzer with Camera



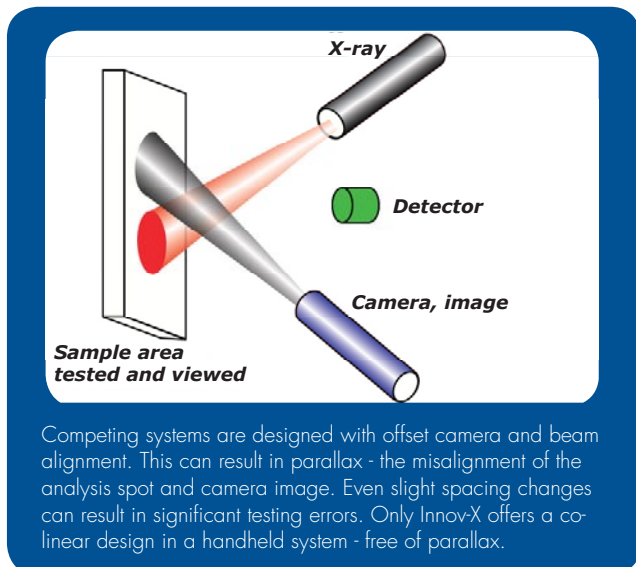
Advanced Co-Linear Optics Technology

For Screening Electronics, Consumer Goods & Packaging Materials

The Alpha Cam system brings a new level of utility to the screening of electronics, consumer goods and packaging materials for regulated elements. Combining unique imaging and on-the-fly 1.5mm, 3mm and 6mm collimator switching providing analytical capability previously only dreamed about in XRF.

Only Innov-X offers an effective imaging system in a handheld XRF spectrometer. This unique design allows the user to actually see where the X-ray beam is testing by having the optical system co-linear with the X-ray path. This superior design yields a crisp, CMOS image of the sample being analyzed. Unlike competing systems that have the imaging optics offset from the path of the X-ray beam, the Alpha Cam sees exactly where the analytical data is coming from, regardless of the collimation used or the distance of the sample from the instrument.

Competitive Systems and Parallax



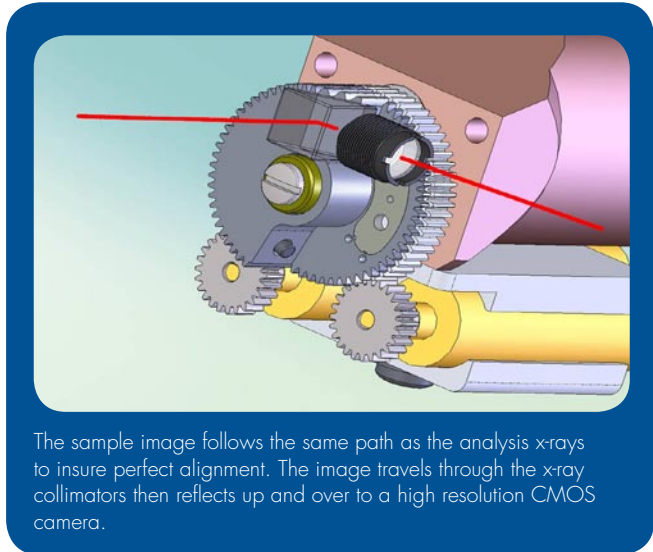
Competing systems are designed with offset camera and beam alignment. This can result in parallax - the misalignment of the analysis spot and camera image. Even slight spacing changes can result in significant testing errors. Only Innov-X offers a co-linear design in a handheld system - free of parallax.

Focus

- Handheld XRF Camera System
- Consumer Products Screening
- RoHS/WEEE Compliance Screening



Exclusive Innov-X Optics



The sample image follows the same path as the analysis x-rays to insure perfect alignment. The image travels through the x-ray collimators then reflects up and over to a high resolution CMOS camera.

Alpha Cam Highlights

- > Co-linear optics and x-rays means no parallax - you'll always x-ray what you see in the image
- > Superior image quality with optically correct lighting
- > High depth of field camera - objects still clear when placed away from XRF window
- > On-the-fly image zoom magnification (1x or 2x)
- > 1.5 mm, 3 mm and 6 mm software selectable collimators for spatially resolved analysis
- > Images are stored with other critical sample data

PRODUCT DATA

RoHS Screening Test Results

Reading #1 12-Aug-2009
RoHS/WEEE Mode

**Alloy
Fail**

El	ppm/%	+/-
Pb	9.96%	0.58% Fail
Cr	<221 ppm	Inc
Hg	<720 ppm	Inc
Cd	<125 ppm	Inc

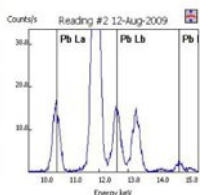


Signature: _____ Date: _____

Test Information:

field1: Interated Circuit Leads
field2: Part Number 35-48993
field3: Lot Number 45
field4: Acme Supply
field5:
field6:

Spectrum:



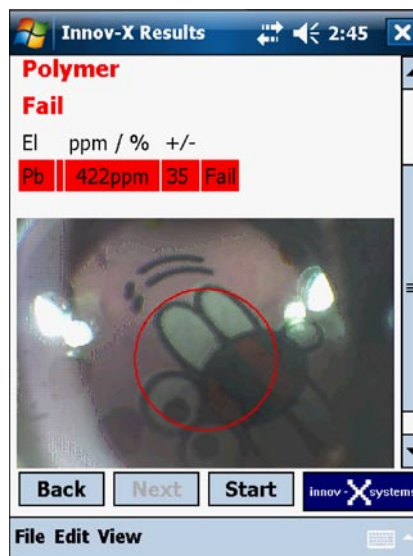
Not Just A Pretty Picture

In focus and on target for every shot, the AlphaCam allows the user to store their data and print a comprehensive report from their PC with Innov-X Systems' optional PC Software.

Report includes:

- > Analytical Results
- > Image of tested sample
- > Test spectrum
- > Sample Information

Results screen on Innov-X AlphaCAM analyzer



www.innovx.com

Basic Specifications

Weight:	2.625 lbs (base weight) 3.375 lbs with batteries
Excitation Source:	X-ray tube, Ag or W anode, 10-40 kV, 10-100 µA, 5 filter positions
Detector:	High resolution, thermo-electrically cooled SiPiN diode detector
Operating Environment:	-10° to +45° C. Humidity 10% to 90% RH, non condensing
Operation:	Trigger or Start/Stop icon. One-touch trigger or "deadman" trigger option. Optional control from external PC
Power Requirements:	Li-ion batteries, rechargeable (charger included). Powers analyzer and iPAQ simultaneously. AC Adapter optional
Battery Life:	6 hours (typical duty cycle), 4 hours continuous (tube on) operation
Display Screen:	Bright, high contrast, color touchscreen. Provides easy viewing in all ambient lighting conditions; 4" TFT active matrix (640x48 res w/ 18 bit color)
Data Display:	Concentrations in ppm, %, spectra or count rate) depending on software mode selected
Data Storage:	Minimum 20,000 test results with spectra
Processor/RAM:	Marvell XScale PXA310 624 Mhz or higher, 128 MB SDRAM, 256 MB Flash
Operating System:	Microsoft Windows Mobile 6.0 Classic
Software Mode:	Consumer Products, RoHS; element list varies with mode
Housing:	Reinforced LEXAN™ housing - weather & dust resistant
Collimation:	1.5, 3 and 6 mm collimators
Camera:	Superior image quality complete with: Full VGA resolution, integrated CMOS camera, selectable zoom & pan, and automatic exposure, white balance & black compensation, flicker avoidance, color saturation

Specifications subject to change without notice.



016-7/09

PRODUCT DATA