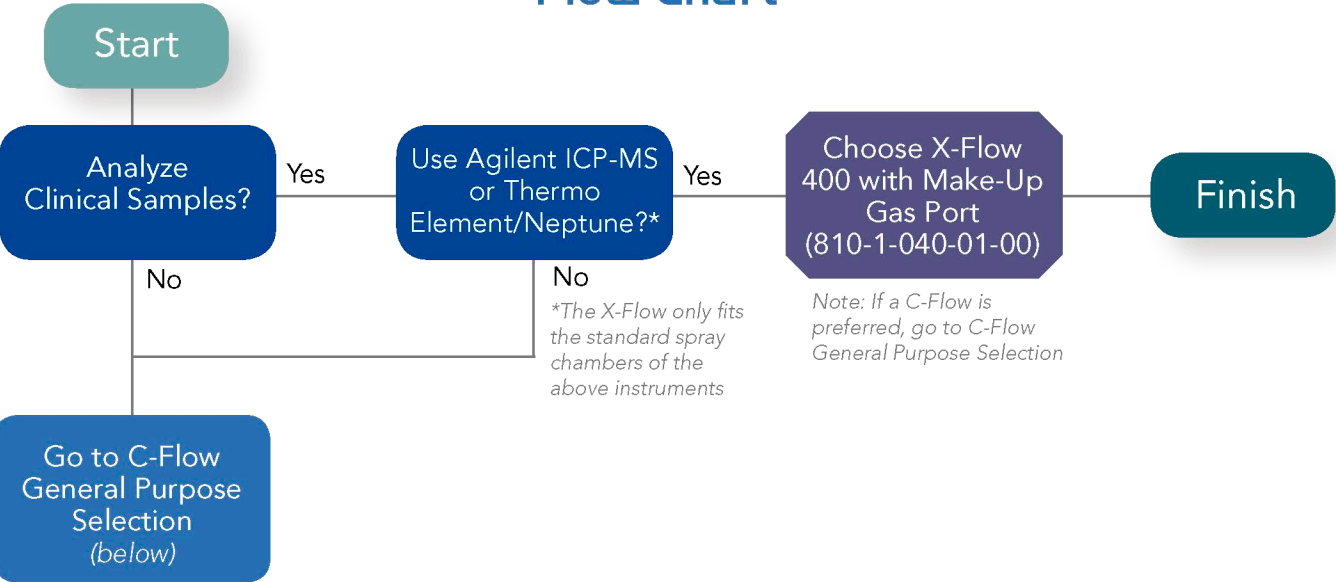


Nebulizer Selection

Flow Chart

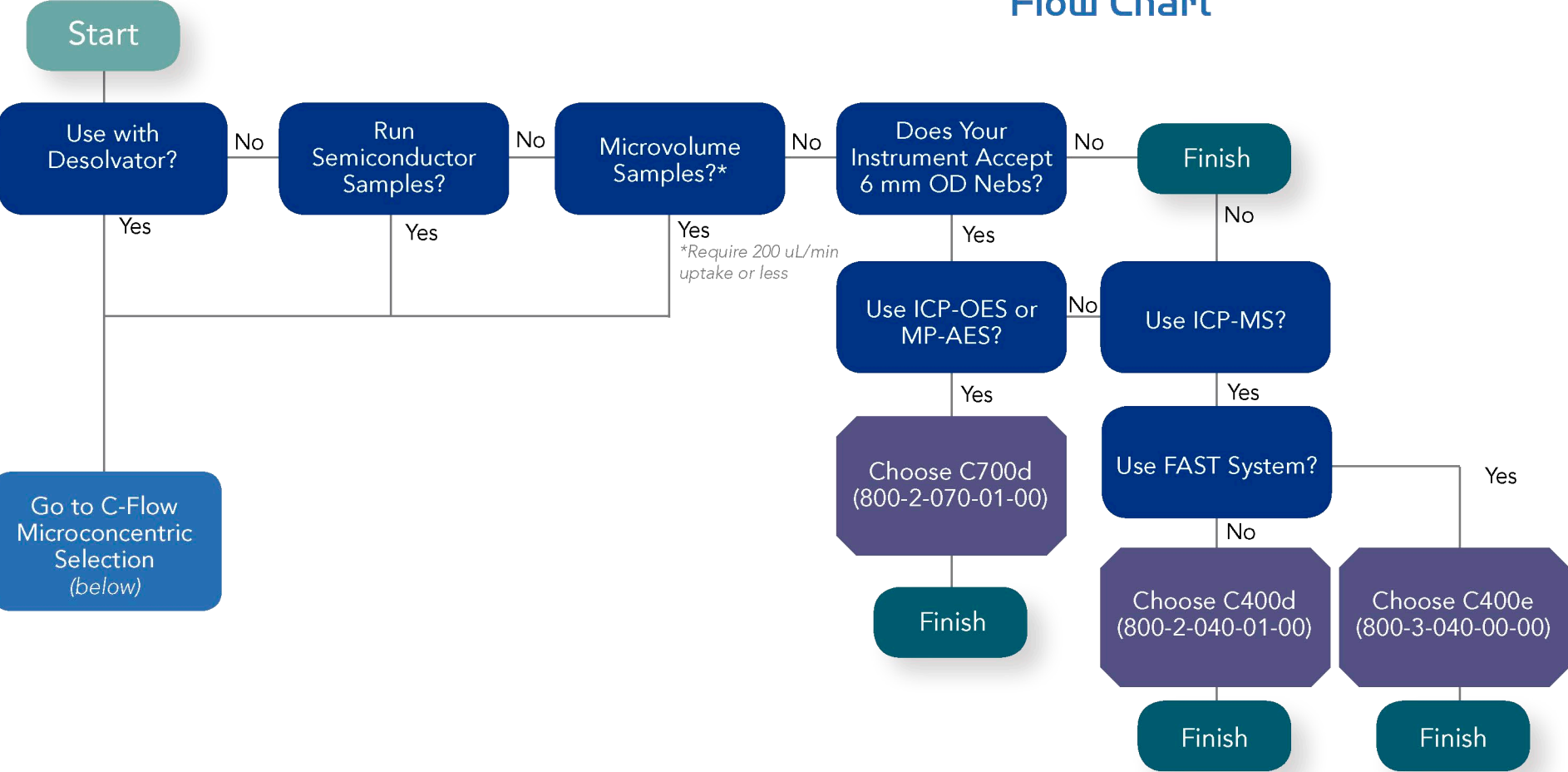


QUANTANALITICA

Via Guido Rossa 14
23875 Osnago (LC) - Italy
Tel. +39 039 9280061
Fax. +39 039 9289636
info@quantanalitica.com
www.quantanalitica.com

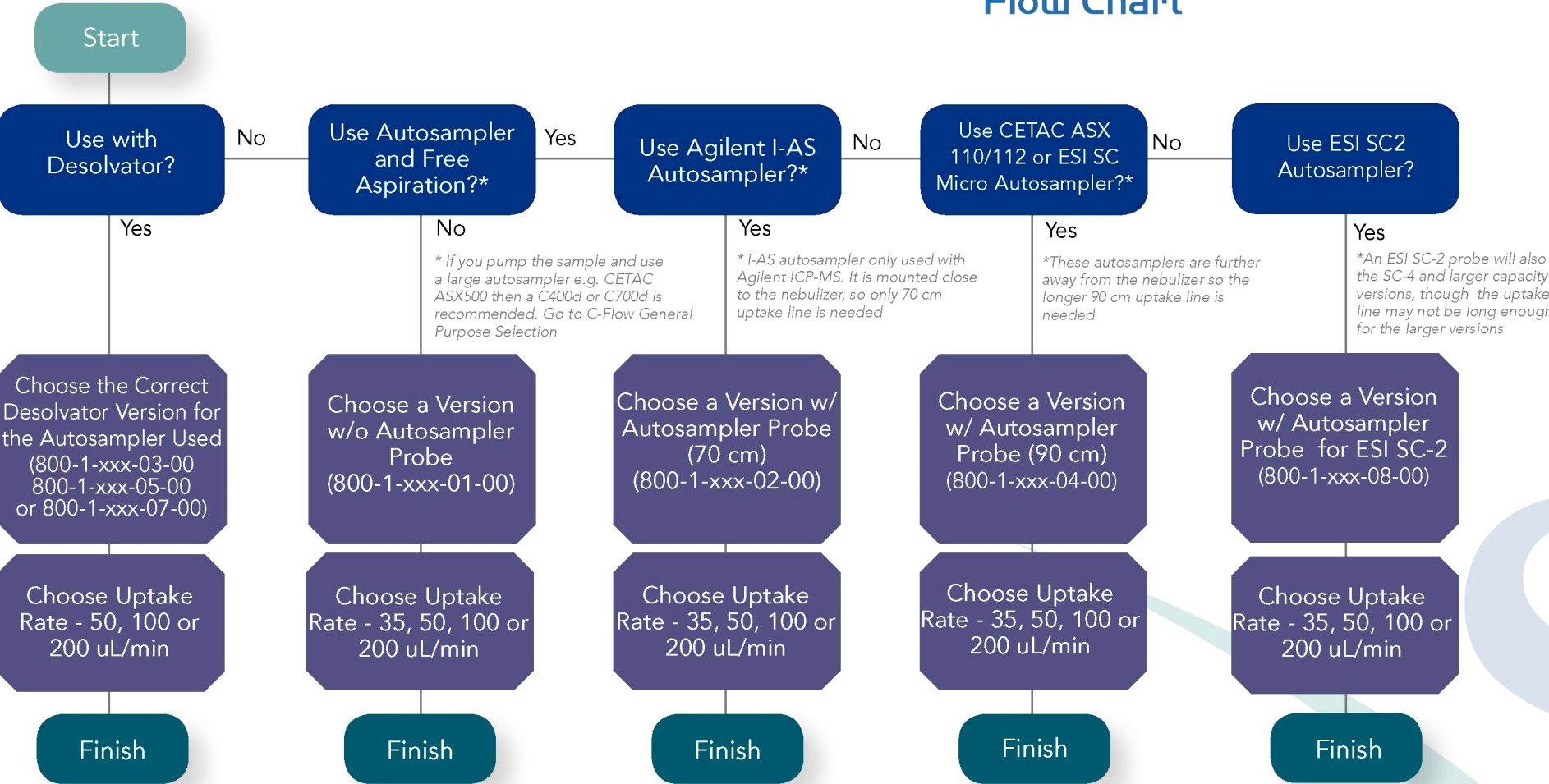
C-Flow (General Purpose) Selection

Flow Chart



C-Flow (Microconcentric) Selection

Flow Chart



Note: Desolvator C-Flows are assembled at 110 °C. They can not be used for normal room temperature applications (i.e. non-desolvator)

Note: The 90 cm C-Flows have a slightly thicker probe to fit ESI autosamplers but can also be used with CETAC ASX 110/112